



**Seventeenth Annual**

---

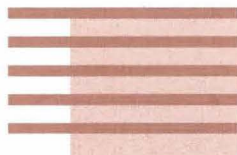
**American  
Mining Hall of Fame  
Awards Presentation  
and Banquet**

---

**December 4, 1999  
The Westin La Paloma, Tucson, Arizona**

---

**Sponsored by  
Mining Foundation of the Southwest**



# PROGRAM

Reception ..... 6:30 p.m.

Banquet Dinner ... 7:30 p.m.

Ceremony ..... 9:00 p.m.

Welcoming Remarks: *Susan F. Wick*

Introduction of Head Table  
and Other Honored Guests: *Susan F. Wick*

Awards Presentation: *William H. Dresher*

Presentation of 1999 Inductees *Jorge Larrea Ortega*  
From Mining's Past: *Presented by John C. Lacy*

*Harrison A. Schmitt*  
*Presented by Robert A. Metz*

Presentation of 1999 Medals of Merit: *Paul W. Allen*  
*Presented by Walter E. Heinrichs, Jr.*

*William C. Peters*  
*Presented by James E. Loghry*

Presentation of 1999 Industry Mineral Information Institute  
Partnership Award: *Presented by William H. Dresher*

Presentation of 1999 Inductee: *Irl F. Engelhardt*  
*Presented by Jack E. Thompson*

Featured Address: *Irl F. Engelhardt*

Adjournment: *Susan F. Wick*



# SPONSORS

AIME

ASARCO Incorporated

BHP Copper Inc.

Bank One

Bechtel Corporation

Brown & Caldwell

Call & Nicholas, Inc.

Cimeta Engineering

Cutler-Hammer

Empire Machinery

Filtemp Sales, Inc.

Freeport-McMoRan Copper & Gold Inc.

Frontier Kemper Constructors, Inc.

Henkel Corporation

Homestake Mining Company

Independent Mining Consultants, Inc.

Industrial Motor & Control

Jim Click Automotive

KD Engineering Co., Inc.

Komatsu Mining Systems, Inc.

Kvaerner Metals

Layne Christensen Company

M3 Engineering & Technology Corp.

Mintec, Inc.

Modular Mining Systems, Inc.

P & H MinePro Services

Peabody Group

Phelps Dodge Exploration Corporation

Phelps Dodge Mining Company

Picor Commercial Real Estate

Pincock, Allen & Holt

Pinter-Hanlon Engineering & Design

Pioneer Equipment Inc.

Southwest Energy, Inc.

URS Greiner Woodward Clyde

US Electrical Motors

Wells Fargo Bank

Williams Detroit Diesel-Allison



# MINING FOUNDATION OF THE SOUTHWEST

The goal and purpose of the Mining Foundation of the Southwest is to promote public understanding of and education related to the mining industry. Toward this goal, the Foundation has funded a number of projects from donations and fund-raising activities.

Examples of projects funded by the Mining Foundation of the Southwest are:

- Computers for use by students in the Department of Mining and Geological Engineering at the University of Arizona
- Funding a new sound system for the mining exhibits at the Arizona Historical Society Museum's Mining Hall in Tucson
- Funds for the purchase of books and publications at the libraries at the Colorado School of Mines, Mackay School of Mines and New Mexico Tech
- Funding geology and mining related interpretive signs at San Pedro Vista and Aspen Vista on the Mt Lemmon Highway in Arizona
- Donation of mineral and rock collection to Arizona-Sonora Desert Museum
- Donation of books, manuscripts and journals relating to the mining industry to Arizona Geological Survey
- Donation of mineral and rock collection and old mining equipment to ASARCO's Mineral Discovery Center
- Publication of 3 volumes of History of Mining in Arizona

The Hall of Fame Awards Banquet serves a dual purpose in educating people about prominent persons associated with the mining industry, both present and past, and raising funds to continue projects of the Foundation.

The Mining Foundation of the Southwest was incorporated in 1993 with the merger of the Mining Club of the Southwest and the Mining Club of the Southwest Foundation. The Mining Club was started in 1971 and the Club's Foundation began in 1983 with the first American Mining Hall of Fame Awards.

The Hall of Fame honorees, both living and deceased now number 74. The plaques which commemorate their induction are on display at the Arizona Historical Society's Museum at 949 East Second Street in Tucson.

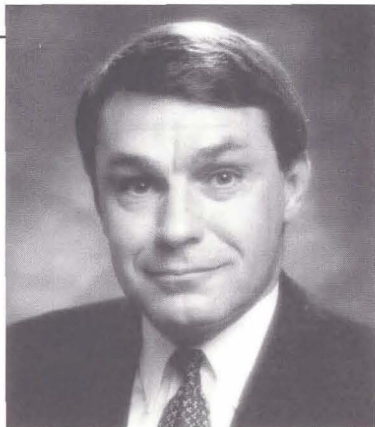


# AMERICAN MINING HALL OF FAME

## 1999 INDUCTEE

### IRL F. ENGELHARDT

**I**rl F. Engelhardt is the Chairman and Chief Executive Officer of Peabody Group. Since joining Peabody, (then a subsidiary of Newmont Mining Company) in 1979, Mr. Engelhardt has held various officer level positions in the executive, sales, business development and administrative areas. After Newmont's acquisition by Hanson Industries, he served as Director and Group Vice President of Hanson Industries, Executive Director of the Energy Group; Chairman of Peabody Resources Ltd. (Australia); Chairman of Citizens Power LLC, Chairman of Cornerstone Construction & Materials and Chairman of Suburban Propane Company. In 1997, Mr. Engelhardt led Peabody into being a separate entity to become Peabody Group as it was spun off from Hanson Industries.



Peabody Group is the largest and one of the fastest growing private sector coal companies in the world. The company owns and operates mines in the United States and Australia. In 1997 its U.S. market share was 14.7 per cent, nearly twice the market share of its nearest competitor. The company markets electric power and other energy commodities and related commodity risk-management products. It also provides services related to the restructuring of generating assets. The Peabody Group's coal is used to generate about 9 percent of all U.S. electricity and about 2.5 per cent of the world's electricity needs. Peabody has a presence in Arizona in the Black Mesa Mine, the Kayenta Mine and the Mesa Operations of the Arizona Operating Unit of Peabody Western Coal Company. Peabody is an acknowledged leader in the field of mine reclamation and has won numerous awards for its reclamation achievements.

Mr. Engelhardt is a past chairman of the National Mining Association and currently is the Chairman of the Coal Industry Advisory Board of the International Energy Agency, Chairman of the Center for Energy and Economic Development and a director of Mercantile Bank of St. Louis, N.A.





# AMERICAN MINING HALL OF FAME

## 1999 INDUCTEE FROM MINING'S PAST

### JORGE LARREA ORTEGA

1912-1999

**J**orge Larrea Ortega was a visionary and entrepreneur without whom the mining industry of Mexico would not be where it is today. He was born at the Hacienda de Pacho, Jalapa, Veracruz, in 1912. He studied at the Military College of Mexico City and began his business career as a painting contractor, and through tenacity, became a director of México Compañía Constructora, one of the largest construction companies in Mexico, where he served for more than 40 years. During his tenure, he supervised the construction of the Southeast Railroad during World War II, a huge challenge due to the lack of material and equipment during this period.



Don Jorge branched out from construction and participated in the formation of a number of companies including Perforadora México, an oil well drilling company; Transportación Marítima Mexicana, a shipping company; Grupo Aluminio, an aluminum company; and Asarco Mexicana, which was the predecessor company of Grupo México, the largest mining company in Mexico.

Don Jorge was twice the president of the Mexico Chamber of Mines, where he established a trust fund for the education of mining engineers, and continued to be an active supporter of Mexico's mining schools and the Association of Mining Engineers, Metallurgists and Geologists of Mexico. In 1989 he was inducted into the Gallery of Distinguished Men in Contemporary Mexico Mining. Don Jorge passed away on March 13, 1999, and was recognized as a "doer and generator of work and wealth."



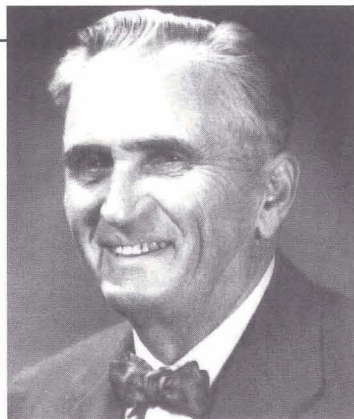
# AMERICAN MINING HALL OF FAME

## 1999 INDUCTEE FROM MINING'S PAST

### HARRISON ASHLEY SCHMITT

1896-1966

**H**arrison Schmitt was born in Mankato, Minnesota in 1896. Schmitt's education at the University of Minnesota was interrupted by service in the Marine Corps in World War I, where his readings into geology and natural affection for nature led him to change his major from chemistry to geology, leading to a Ph.D. in geology in 1926.



His studies of ore deposits and work on the vein, manto and pipe types of ore deposits in Mexico, southern Arizona, Nevada and New Mexico between 1922 and 1931 gave him extensive knowledge of the structure, mineralogical association and ore-finding techniques related to hypogene ore deposits and supergene alteration. His interest then turned to exploration for disseminated, or "porphyry," copper deposits, and led to an unprecedented string of successful mining property developments; including the Christmas, Esperanza and Mineral Park Mines in Arizona; Battle Mountain Mine in Nevada, and the evaluation of the Bor Mine in Yugoslavia and the Toquepala Mine in Peru.

He wrote extensively on the systematic use of geological techniques in ore search and mining. His 1939 paper on the Pewabic Mine (New Mexico) is considered to be one of the foremost examples of systematic field geology coupled with laboratory investigations applied to a problem of ore deposition and mining. In 1950, he was among the first to document the importance of the hot spring environment in epithermal deposits, stressing the importance of wallrock alteration as a possible source of vein silica.



# AMERICAN MINING HALL OF FAME

## 1999 MEDAL OF MERIT RECIPIENT

### WILLIAM C. PETERS

**B**ill Peters was born in Oxford, Ohio, in 1920, and received a degree in Geology from Miami University. After service in World War II, he finished his education at the University of Colorado with an M.S. in Geology in 1948 and his Ph.D. in 1957.

His professional career began in 1948 as a mining geologist for the New Jersey Zinc Company at Gilman, Colorado, and during 1951 to 1960 he worked in mineral and mine development with FMC Corporation. In 1960, he became Chief Geologist for Kennecott Copper Corporation's Utah Copper Division, where he continued until he joined the newly formed Department of Mining and Geological Engineering at the University of Arizona's College of Mines in 1964.

As Professor of Geological Engineering he taught courses in mining geology, mineral exploration, exploration programs and mine evaluation, and during the summer months supported topical courses and field experience in modern exploration projects in the Americas, Africa and Europe.

In addition to some 50 contributions to technical literature, he is the author of *Exploration and Mining Geology*, editions in 1978 and 1987, which has become a standard university text worldwide.

Upon retirement from the University of Arizona in 1982, Bill became a senior associate with Behre Dolbear & Company, and continues working on exploration, mine evaluation and mine development worldwide. He recently served as consulting editor and a contributing author in mining engineering for McGraw-Hill Encyclopedias and Yearbooks of Science and Technology.





# AMERICAN MINING HALL OF FAME

## 1999 MEDAL OF MERIT RECIPIENT

### PAUL S. ALLEN

**P**aul Allen was born in Chambersburg, Pennsylvania, in 1915 and received a B.S. in Mining Engineering from MIT in 1937. He began his professional career as a mine engineer with Inland Steel Company and in 1942 moved to the National Lead Company's titanium mine at Tahawus, New York as a mine engineer. He joined Cyprus Mines Corporation at its mine on Cyprus in 1947 to mechanize the operation but soon returned to Tahawus as General Superintendent of Operations for National Lead Company.



In 1955 he rejoined Cyprus at its Los Angeles headquarters as Corporate Vice President where he became responsible for the open pit conversion and later expansions of the Pima Mine south of Tucson and served as President of the Pima Mining Company until his retirement. During this time he was responsible for the acquisition and expansion of the Bagdad mine and the reopening of the Old Dick and Bruce Mines near Bagdad.

During 1965 to 1968 he was responsible for the startup of the Goldsworthy Mining Ltd. iron operations in Western Australia, which, in addition to developing an open pit mine, involved the building of a railway and port facilities for loading 60,000 ton vessels. Upon his return to Los Angeles in 1969, he was made executive Vice President and later a director of Cyprus Mines Corporation. He retired in 1980 and became an independent consultant.



# AMERICAN MINING HALL OF FAME

## 1999 INDUSTRY PARTNERSHIP AWARD

### MINERAL INFORMATION INSTITUTE

**T**he Mineral Information Institute (MII), headquartered in Golden, Colorado, is a national private, not-for-profit organization



MINERAL  
INFORMATION  
INSTITUTE, INC.

whose mission is to provide public education with respect to the earth's mineral and energy resources and the proper development and use of these resources. It develops and distributes earth science curricula and text material for use in grades K through 12 with the aim of providing students with a non-biased, balanced view of the development and utilization of the earth's mineral and energy resources.

MII has been successful in getting its materials accepted by state and local public schools throughout the nation and is currently working with more than 28,000 teachers in all 50 states, U.S. territories and armed forces locations overseas. There are 504 teachers in Arizona currently using MII curriculum materials. In addition to the teachers in direct contact with MII, an additional 4,000 to 6,000 MII mineral information packets are distributed to teachers each year by other organizations involved in their own high school teacher education programs. Further, schools of education from a growing number of colleges and universities throughout North America are now presenting MII materials in their teacher education programs. Last year, nearly 300 colleges and universities were involved. The 5<sup>th</sup> printing of MII's textbook, *Global Science: Energy, Resources, Environment*, by John W. Christensen, will be released in January.



# MINING FOUNDATION OF THE SOUTHWEST

---

## Board of Governors

Susan F. Wick - *President*  
William H. Dresher - *Vice President*  
R. W. Ballmer  
Roshan Bhappu  
Wayne H. Burt  
John L. Cesar  
Milton M. Evans  
Walter E. Heinrichs, Jr.  
Marvin A. Hustad  
Martin C. Kuhn  
John C. Lacy  
James D. Loghry  
Robert A. Metz  
Frank R. Milliken, Jr.  
William C. Peters  
Charles R. Sewell  
A. Everett Smith  
David M. Spatz  
Jack E. Thomson  
Rob W. Vughtveen  
Herbert E. Welhener  
Gordon W. Wieduwilt  
Martin R. Wiggins  
William H. Wilkinson  
Harry J. Winters, Jr.

---

## Hall of Fame Committee

William H. Dresher - *Chairman*  
David M. Spatz - *Past Chairman*  
Susan F. Wick - *ex officio*  
Donald F. Earnest  
Milton M. Evans  
Walter E. Heinrichs, Jr.  
Martin C Kuhn  
John C. Lacy  
Willard C. Lacy  
James D. Loghry  
J. David Lowell  
Robert A. Metz  
Charles R. Sewell  
Jack E. Thompson  
Herbert E. Welhener  
Martin R. Wiggins  
William H. Wilkinson

---

## Gold Members

A. Frederick Banfield  
Milton M. Evans  
Peter Robbins  
Jack E. Thompson  
Milton H. Ward  
William H. Wilkinson

---

## Silver Members

George J. Allen  
Wayne H. Burt  
Eric Seedorff  
John C. Lacy  
Frank R. Milliken  
Forest E. Rickard  
Susan F. Wick



# AMERICAN MINING HALL OF FAME

**1983 Inductee**  
George E. Atwood

**1984 Inductee**  
Charles F. Barber

**1985 Inductee**  
George B. Munroe

**1986 Inductee**  
John C. Duncan

**1987 Inductee**  
Plato Malozemoff

**1988 Inductee**  
Simon D. Strauss

**1989 Inductee**  
G. Robert Durham

**1990 Inductee**  
Harry M. Conger

**1991 Inductee**  
Kenneth J. Barr

**1992 Inductee**  
T S Ary

**1993 Inductee**  
Milton H. Ward

**1994 Inductee**  
J. Burgess Winter

**1995 Inductee**  
Douglas C. Yearley

**1996 Inductee**  
Richard de J. Osborne

**1997 Inductee**  
James R. Moffett

**1998 Inductee**  
Charles Graham Preble

## Medal of Merit Recipients

Ralph J. Roberts, 1989  
Victor H. Verity, 1989  
John S. Livermore, 1990  
George D. Argall, Jr., 1991  
Arthur A. Brandt, 1992  
William C. Epler, 1992

Walter E. Heinrichs, Jr., 1993  
Willard C. Lacy, 1993  
Donnell W. Agers, 1994  
J. David Lowell, 1994  
Ronald R. Swanson, 1994  
Warren Kay Pincock, 1995  
Richard W. Hutchinson, 1996

Charles L. Pillar, 1996  
Hugo T. Dummett, 1997  
Spencer Rowe Titley, 1997  
David N. Skillings, Jr., 1998  
José Rubén Velasco  
Rodríguez, 1998

## Industry Partnership Award

Caterpillar, Inc. - Glen A. Barton, 1995  
Amigos (Arizona Mining & Industry Gets Our Support), 1996  
Colorado School of Mines, 1997  
Stephen D. Bechtel, Jr. and Bechtel Corporation, 1998





# AMERICAN MINING HALL OF FAME

## 1983-1998 Inductees from Mining's Past

Maxie L. Anderson 1934-1983	Meyer Guggenheim 1825-1905	Donald H. McLaughlin 1891-1959
Bert S. Butler 1877-1960	Hal W. Hardinge 1855-1943	Seeley W. Mudd 1861-1926
Nellie Cashman 1849-1925	George Hearst 1820-1891	Charles Debrille Poston 1825-1902
Louis S. Cates 1881-1959	Joseph Austin Holmes 1859-1915	Frederick Leslie Ransome 1868-1935
William Andrews Clark 1839-1925	Herbert C. Hoover 1874-1964	Rossiter W. Raymond 1840-1918
John Van Nostrand Dorr 1872-1962	Daniel C. Jackling 1869-1956	Robert H. Richards 1844-1945
James Douglas 1837-1918	H. Myles Jacob 1913-1997	Thomas A. Rickard 1864-1953
James Stewart Douglas 1868-1949	Ira B. Joralemon 1884-1975	Louis D. Ricketts 1859-1940
Charles F. Fogerty 1921-1981	Henry Krumb 1875-1958	Reno H. Sales 1876-1969
Antoine M. Gaudin 1896-1974	John Cromwell Lincoln 1866-1959	Fred Searls, Jr. 1888-1968
Wesley P. Goss 1899-1985	Waldemar Lindgren 1860-1939	Antonio Siraumea 1710-1760
William C. Greene 1853-1913	Curtis H. Lindley 1850-1920	Arthur F. Taggart 1884-1959
John C. Greenway 1872-1926	John William Mackay 1831-1901	William Boyce 1869-1930
		Arthur Redman Wilfley 1860-1927



# MINING FOUNDATION OF THE SOUTHWEST

The American Mining Hall of Fame Committee of the Mining Foundation of the Southwest would like to thank Modular Mining Systems, Inc. for its continued support by typesetting and printing this evening's programs. Modular has provided this contribution for many years.



# MINING FOUNDATION OF THE SOUTHWEST



# MINING FOUNDATION OF THE SOUTHWEST

## Mining Foundation of the Southwest

P.O. Box 42317

Tucson, AZ 85733

Clare A. Roscoe, Mgr.

phone: (520) 577-7519

fax: (520) 577-7073

email: [mfsw@dakotacom.net](mailto:mfsw@dakotacom.net)

<http://www.dakotacom.net/~mfsw>

