

Fourtieth Annual
American Mining Hall of Fame



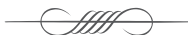
**Awards
Presentation**
BANQUET & FUNDRAISER

Saturday, December 3rd, 2022
JW Marriott Starr Pass Resort & Spa, Tucson, Arizona

Program

6:00 p.m. RECEPTION
 7:00 p.m. BANQUET
 8:00 p.m. CEREMONY

- Welcoming Remarks: **AMANDA BEST**, PRESIDENT, MMEF
- Introduction of Honorees and Honored Guests: **AMANDA BEST**
- Awards Opening Remarks: **ROBERT TRACY**, VICE PRESIDENT, MMEF
- Outreach Program Update: **CHRISTOPHER EARNEST**,
 OUTREACH COORDINATOR
- Presentation of Inductees From Mining's Past
 BY ROBERT TRACY: **ZENO LIGHTFOOT DILI**
 (1893 – 1927)
 ACCEPTED BY JENNIFER DILI ROY
- J. C. "BUCK" O'DONNELL**
 (1901 – 1969)
 ACCEPTED BY MARGIE HANSON
- JOHN HASKELL DAVIS, JR.**
 (1915 – 1996)
 ACCEPTED BY CINDY HAYOSEK
- DONALD J. LUNT**
 (1929 – 2019)
 ACCEPTED BY JOSEPHINE LUNT
- Presentation of Medal of Merit
 BY ROBERT TRACY: **STEVE TRUSSELL**
- Presentation of Medal of Merit Under age 40
 BY ROBERT TRACY: **OMAR SMITH**
- Presentation of Industry Partnership Award
 BY ROBERT TRACY: **RUEN DRILLING, INC.**
 ACCEPTED BY ARLAN RUEN, CHIEF EXECUTIVE OFFICER
- Presentation of Special Recognition Award
 BY ROBERT TRACY: **MONTANA TECHNOLOGICAL UNIVERSITY,
 DEPARTMENT OF METALLURGY AND MATERIALS ENGINEERING**
 ACCEPTED BY DR. JEROME DOWNEY, DEPARTMENT HEAD
- Grand Door Prize **AMANDA BEST**
- Presentation of Inductee
 BY AMANDA BEST: **DENISE C. JOHNSON**
- Featured Address **DENISE C. JOHNSON**
- Adjournment **AMANDA BEST**



Sponsors

DIAMOND

Caterpillar

Komatsu America Corp.

PLATINUM

Eclipse Mining Technologies

Hexagon

Epiroc

M3 Engineering & Technology Corp.

Freeport-McMoRan

Titan Mining

GOLD

Ames Construction

Newmont

ASARCO - AMC, Grupo Mexico

Ruen Drilling

Capstone

Rummell Construction

Doosan Bobcat

Southwest Energy LLC

Empire Southwest

SRK Consulting

Independent Mining Consultants, Inc.

Stantec

Meridian Engineering Company

WestLand Resources, Inc.

MMSA

SILVER

Ausenco

Modular Mining Systems, Inc.

BGC Engineering

Montgomery & Associates

CAID

Next Plan LLC

CalPortland

Pam & Will Wilkinson

Cascade Drilling

Pioneer Equipment Inc.

CEC

Professional Minerals Development

Cementation

Recon Engineering & Construction

CTI

Ryerson

Deconcini McDonald Yetwin & Lacy, P.C.

Resolution Copper

E3 Strategies

Skyline Assayers

John Fenn

South32

Fennemore

TP McNulty & Associates

First Majestic Silver

Tetra Tech

Florence Copper

George Tsiolis Law

Hanlon Engineering

Tucson Electric Power

Hudbay

Thyssen Mining

Ivanhoe Electric

Valley Forge & Bolt

KGHM Carolota Mine

WSP Golder

Major Drilling

Yellow Jacket Drilling Services

OTHERS

National Mining Hall of Fame & Museum

Mining and Mineral Education Foundation

The Board of Governors of the Foundation has voted to change the name of the Mining Foundation of the Southwest to the Mining and Mineral Education Foundation (MMEF) after several years of comprehensive study and serious consideration. This was launched in October of 2022. The change was made to better reflect our vision of education and increasing awareness in mining and mineral resources not only regionally, but also globally.

The Foundation was incorporated on May 3, 1993, to allow for tax deductible contributions to be used for charitable and educational purposes. At its annual fundraiser, the American Mining Hall of Fame honors achievements of industry leaders in the mining and mineral resources community. Including the 2022 inductees, 269 mining luminaries and organizations have been inducted.

Funds generated through sponsorships of the annual banquet are earmarked to support our mission. The MMEF partners with School of Mining & Mineral Resources at the University of Arizona and is a prominent financial funding source for the Education Outreach Program.

The Outreach Program has reinvented itself by embarking on new and innovative ways to reach students, educators and the public combining virtual

learning with in-classroom presentation and hands-on activities. Chris Earnest, Outreach Coordinator has spearheaded the effort with the advent of the “Minerals Make It” video series which have been viewed over thousands of times. Virtual mine tours using Google Earth are available online as well as “Hiking Tours” covering historic mine sites and a tour that emphasizes how minerals are used in everyday life such as the rock wall surrounding The University of Arizona.

As the new year approaches, schools are requesting both in-person and virtual sessions from the Outreach Program. The SX Mine is open for tours as is the Flan-drau Science Center & Planetarium. With your help, the Outreach Program will continue to educate and emphasize the positive effects on our lives of mining and mineral resources.

“The most interesting thing that I learned this time would be how much mining needs to continue... we are reliant upon the minerals in the mines. It was a reminder to think of how our cell phones are comprised from the minerals found in mines and it made me think about electric cars and how many more electric cars are now being produced and purchased.”
-11th grade Science and Engineering Teacher from Tucson

Mining and Minerals Education Foundation

P.O. Box 42317
 Tucson, AZ 85733

THOMAS L. ALDRICH
 EXECUTIVE DIRECTOR
 Phone: (520) 577-7519

email: admin@miningfoundationsw.org
www.miningeducationfoundation.org

2022 Hall of Fame Committee

Robert Tracy – *Chair*
 Amanda Best – *ex officio*

Thomas Aldrich
 Kathy Arnold
 Mark Baker
 Jodi Banta
 Robin Barnes
 Avi Buckles
 Caelen Burand
 Lawrence G. Dykers
 Chris Earnest

Donald F. Earnest
 John Fenn
 Shawn Hamilton
 William E. Hawes
 Corolla (Cori) Hoag
 Yvonne Marshall
 Rebecca Martinez
 Julia Potter
 Brad Ross

Tom Scartaccini
 Andrew Soderman
 Deb St. Aubin
 David Travis
 Gene Waken
 William H. Wilkinson
 Chris Wilson
 Rod Woodcock

Denise C. Johnson

GROUP PRESIDENT, RESOURCE INDUSTRIES, CATERPILLAR, INC.

Denise C. Johnson is a group president of Caterpillar Inc. She has responsibility for Resource Industries (RI), which includes Integrated Components and Solutions Division, RI Operations and Products Division, RI Sales, Services and Technology Division, and Strategic Procurement and Planning Division.

Johnson joined Caterpillar in 2011 and initially served as the general manager of Specialty Products within Caterpillar's Reman & Components Division, where she had global responsibility for wear component products and facilities. She previously had a career with General Motors, where she built deep expertise in operations and product management. In 2012, the Caterpillar Board of Directors named Johnson vice president of the Diversified Products Division. In 2013, Johnson was named vice president of Integrated Manufacturing Operations, and in 2014, she was named vice president of Material Handling & Underground Division. She was named group president of Resource Industries in April of 2016.

Johnson, a native of Portland, Michigan, graduated from Michigan State University in 1989 with a Bachelor's Degree in Mechanical Engineering. She earned dual Master's Degrees in Mechanical Engineering and Business Administration from

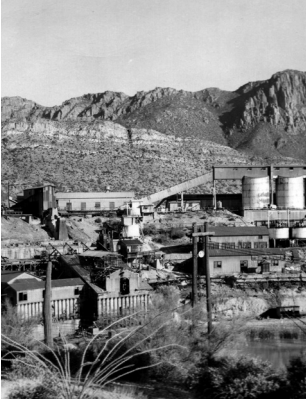


the Massachusetts Institute of Technology (MIT) in 1997 as a Fellow of the MIT Leaders for Global Operations program.

Johnson is a member of numerous outside boards, including National Mining Association Board of Directors, National Association of Manufacturers, The Mosaic Company, MIT Leaders for Global Operations Governing Board, and the US Chamber of Commerce.

Zeno Lightfoot Dili

(1893 – 1927) HOISTMAN AND HERO



Zeno Lightfoot Dili was an Apache underground miner from Rice (absorbed by the Town of San Carlos), Arizona. Like many other San Carlos and White Mountain Apache men in the Copper Triangle of Arizona, Dili worked in the copper mining industry.

The Apache have a long and proud history in Arizona, and by the early 1900s there were Apache mining camps at Superior, Ray, and Miami, Arizona. Dili, who is still remembered in San Carlos as a selfless man who could always be counted on, worked underground as a cage operator at the Magma Copper Company mine in Superior during the late 1920s.

In the early hours of the morning on Thanksgiving Day in 1927, a devastating fire broke out in the Magma No. 2 shaft, entrapping forty-nine men underground at the 500-ft level. Following frantic attempts to contact the trapped miners, Dili heroically offered to go down the mine to establish contact. While taking the cage back down to the 500-foot level to rescue other trapped miners, the cable snapped, and Dili was lost.

Dili's ultimate sacrifice was noted from Arizona to Washington D.C. where it was stated that "his name is written on the roles of those who gave their all." Dili was posthumously honored with a gold medal for his bravery and heroism by the Joseph A. Holmes Safety Association in 1935. Dili and other Apache miners' contributions to the mining industry should be remembered as an important part of Arizona's mining history.

J. C. "Buck" O'Donnell

(1901 – 1969) ILLUSTRATOR AND MINER



Buck O'Donnell was a talented illustrator and cartoonist of late-nineteenth-to-mid-twentieth century mining practices. His drawings were based on his experience, which ranged from mucker to mine superintendent. His experience over an extensive career, involving places such as Butte, Montana, Grass Valley, California, and Utah provided a wealth of subjects.

He had an eye for detail, and just happened to have a good sense of humor to go along with it. Subjects that he illustrated included haulage and transport, poetry and cartoons, miners' customs and leisure, mucking and loading, hoisting, prospecting, milling, timbering, shaft sinking, safety, underground lighting, blasting, high-grading, and the Cornish pump.

He lived through a technological revolution in mining and was part of it, as manager of Shaft & Development Machines Co. of Salt Lake City, a manufacturer of mining equipment. Here, he made improvements in the Cryderman mucker, and shared a patent for these improvements. He would also travel to mines that had purchased a Cryderman and instructed the mine's crews on how to operate it.

Aside from his work with Shaft & Development Machines, he worked for the Anaconda Copper Mining Company at Butte, Montana and the Idaho Maryland Mining Co. in Grass Valley, California.

John Haskell Davis, Jr.

(1915 – 1996) ENGINEER AND DESIGNER



John Haskell Davis, Jr. spent his entire professional career in the world of copper mine-concentrator-smelter operations. Born in Bisbee, Davis grew up in Tombstone and Douglas. He earned a Degree in Mechanical Engineering from Cornell University in 1938.

His first job with Phelps Dodge Corp. was assisting the powerhouse foreman in PD's Clarkdale, Arizona smelter. Following combat in Europe during WWII as an Army officer, Davis joined PD's Western Engineering Department and worked on the Ajo smelter and Bisbee's concentrator. In 1957, he began leading Western Engineering as its chief mechanical engineer. He either personally designed or approved staff-drawn plans for PD projects around the world.

Davis invented processes creating reformed gas, using it to reduce oxygen-containing copper ores, and producing sponge iron from copper-iron ores. Among his designs were various expansions, especially in 1969-70 Morenci, including improvements to the water supply, power plant, aerial tramway, crusher, reverberator and concentrator.

In the 1970s, Davis designed electrostatic precipitators and other PD plant modifications to meet changing pollution control laws. He designed and oversaw construction of PD's reactivated plant and residential town at Tyrone, New Mexico and subsequent expansion. He selected the site and decided upon flash furnace technology used for the Hidalgo, New Mexico smelter. It opened in 1976 as the first U.S. copper smelter designed from inception to meet state and national air quality emission standards.

Davis retired in 1978 and remained in Douglas. He had served as Douglas Water Commission head from 1954-1965, and continued volunteer work in civic, social and church organizations until his death.

Donald J. Lunt

(1929 – 2019) MINING HISTORIAN



Donald J. Lunt was a lifelong Greenlee County, Arizona resident and devoted avocational historian of the old Copper Mountain or Clifton-Morenci mining district.

Mr. Lunt was born in 1929 in a small house on D Hill in Old Morenci and lived most of his life in the Clifton-Morenci area. For most of his adult working life, he was employed by the Phelps Dodge Corporation, the former operator of the Morenci mine from 1921 until 2007. In his free time, Mr. Lunt was an avid photographer.

Following his retirement from Phelps Dodge in the early 1990s, he spent much of his time working as a local historian with the Greenlee County Historical Society. In this setting, he amassed a large collection of historical photographs, including diverse images of the Copper Mountain district and surrounding area. His expertise in local history was often called upon, and he worked closely with Freeport-McMoRan to identify, organize, and digitize a large collection of glass negative photographs of Clifton-Morenci.

In 2018, historians worked with Mr. Lunt and his wife, Josephine, to catalogue his many photographs and, more importantly, to record his knowledge about each one and the scenes and subjects they depict. Mr. Lunt's devotion and love of mining history will live on through his invaluable contributions to the study of one of the most famous copper districts in the West.

Steve Trussell

EXECUTIVE DIRECTOR, ARIZONA ROCK PRODUCTS ASSOCIATION &
ARIZONA MINING ASSOCIATION MINING ADVOCATE AND LOBBYIST



Steve Trussell received a B.A. and Master's Degree from Arizona State University and a Post Baccalaureate Degree from Ottawa University. He began his career in mining as a consultant for the Arizona Mining Association (AMA) as an advocate of the copper mining industry and later with the Arizona Foundation for Resource Education.

Trussell joined Arizona Rock Products Association (ARPA) in 2002 as Community Relations Director and became the Executive Director in 2007. He is responsible for the promotion and preservation of the sustainability of the rock & construction materials industry

through active involvement with Arizona public officials on the policy, regulatory and community relations challenges facing the rock products industry.

In 2017, Trussell added to his responsibilities by becoming the Executive Director of the Arizona Mining Association where he showcases his advocacy for the mining industry and utilizes his skills in community relations, government affairs, regulatory processes and general legislative processes at the federal, state and local level.

He serves on several boards and committees including the Technical Advisory Board for the Center of Environmentally Sustainable Mining, The Governor's Regulatory Review Council, Executive Committee for the University of Arizona's Mining School and the Board of Directors for the Arizona Chamber of Commerce and Industry.

Trussell has been nominated for two national instructor of the year awards, was inducted in the Minor League Football Hall of Fame, received the Adjutant General's Medal from the Arizona National Guard, has been recognized as Policy Leader of the Year at the Arizona State Capitol and was honored by the National Sand, Stone and Gravel Association as the State Association Executive of the Year. In addition, he has served numerous charitable organizations.

His greatest accomplishment is being married to and having the opportunity to support his amazing wife, Ashley.

Omar Smith

SENIOR CIVIL ENGINEER, WSP

Omar Smith holds a B.S Degree in Civil Engineering and a Minor in Mathematics from The University of Arizona. During his early years in school, Smith was convinced that structural engineering would be his career path. Through his internships during his junior and senior years, his focus switched to water resources engineering.

Upon graduating, Smith joined Castro Engineering in Tucson as a staff engineer supporting its Flood Control Section. He then moved to Knight Piésold's Tucson Office as a staff engineer, where he expanded his H&H engineering design skills and gained experience in three-dimensional CAD design, slope stability analysis, field engineering, construction quality assurance (CQA), and technical writing.

In 2012, Smith joined URS, later becoming AECOM via acquisition, as a Project Civil Engineer in their GeoCivil Department and was eventually promoted to GeoCivil Team Leader. He supported the mining, power, and flood control industries in South America and the Southwest U.S.

In 2019, Smith joined Wood as a Senior Civil Engineer in Phoenix supporting the Geotechnical Service Line. He manages the Phoenix Civil Design Team responsible for the design of mining related facilities. In September of 2022, WSP acquired Wood.

Smith is an active member of SME and its Tucson Section . He is presently on the SME Environmental Division Executive Committee, is the Environmental Division's Program Chair for the 2023 SME Annual Conference & Expo and is serving a 3-year commitment on the SME



Structure and Governance Standing Committee. He has been involved with the SME Tucson Section for over 11 years, serving as Webmaster, Vice Chair, and as Chairman of the Section for 3 years, providing critical leadership during COVID. He presently serves as the Immediate Past Chair and Scholarship Chair.

Born in Yuma, Arizona, he lived his first years in San Luis Rio Colorado, Sonora, Mexico. When he was 6 years old, his family moved to San Luis, Arizona. Smith attributes his success to his humble upbringing, the guidance of his mother, and the constant support he has received from his family, friends, coworkers, and mentors. In his spare time, he likes to spend time with his family, work on vintage Volkswagens, go camping, and visit a beach in Mexico on special occasions.

2022 | INDUSTRY PARTNERSHIP AWARD

Ruen Drilling Inc.



Providing drilling services to the following industries:

Environmental | Industrial Minerals | Metals Mining | Geotechnical Engineering | Groundwater

Montana Technological University, Department of Metallurgical and Materials Engineering

In 1922, the **Montana School of Mines** (MSM) began offering a separate Metallurgical Engineering degree that focused on mineral processing and extractive metallurgy. In the early 1960s, the program was broadened to involve materials engineering and thereby include physical metallurgy and materials processing, particularly ceramics. Although changes to the degree offerings have since been implemented to meet the changing needs of industry, the program has retained its broad base and focus on mineral processing and extractive metallurgy. In 2000, the present name of Metallurgical & Materials Engineering (M&ME) was adopted.

Undoubtedly, the program will continue to evolve but it will always honor its heritage thereby helping fulfill Montana Tech's mission. As one of the oldest programs at Montana Tech, the Metallurgical & Materials Engineering program continues to fulfill the historical mission of The School of Mines and Engineering as well as the needs and interests of mineral- and metal-related industries while simultaneously addressing those of the materials industries. The goal is to provide students a quality education with an appropriate blend of theory and practice so they can successfully and confidently enter a career and contribute to the profession and society.

The Department strives to attract and retain the highest quality engineering students to provide resource-based industries with minerals, metals and materials process engineers while maintaining the heritage of Montana Tech. The department continues to sustain coveted programs with emphasis on learning experiences to research and provide solutions for the future needs of society.

Graduates of the program have a passion for excellence and are recognized among the world's most versatile engineers. Growth in the metallurgical and materials engineering disciplines and these related fields has been substantial and has accordingly increased the opportunities for graduates of the program. In this regard, graduate placement has been 100% for over two decades.

MONTANA
TECHNOLOGICAL UNIVERSITY

American Mining Hall of Fame

Inductees (1983-2021)

1983	George E. Atwood	2003	Thomas J. O'Neil
1984	Charles F. Barber	2004	J. Steven Whisler
1985	George B. Munroe	2005	Pierre Lassonde
1986	John C. Duncan	2006	Jack E. Thompson, Jr.
1987	Plato Malozemoff	2007	Dennis R. Washington
1988	Simon D. Strauss	2008	Timothy R. Snider
1989	G. Robert Durham	2009	Tom Albanese
1990	Harry M. Conger III	2010	Richard C. Adkerson
1991	Kenneth J. Barr	2011	Laurence Golborne Riveros
1992	T.S. Ary	2012	Gregory H. Boyce
1993	Milton H. Ward	2013	James D. Toole
1994	J. Burgess Winter	2014	Armine Frederick Banfield, Jr.
1995	Douglas C. Yearley	2015	Conrad Huss
1996	Richard de J. Osborne	2016	Oscar González Rocha
1997	James R. Moffett	2017	Gary Goldberg
1998	Charles G. Preble	2018	Harry M. (Red) Conger
1999	Irl F. Engelhardt	2019	Darren M. Pylot
2000	Ronald C. Cambre	2020	Lukas Henrik Lundin
2001	A. Dan Rovig	2021	Robert Friedland
2002	J. David Lowell		

Industry Partnership Awards (1995-2021)

1995	Caterpillar, Inc. - Glen A. Barton	2008	Atlas Copco Construction Mining Technique USA LLC
1996	AMIGOS (Arizona Mining & Industry Gets Our Support)	2009	Boart Longyear Company
1997	Colorado School of Mines	2010	Prospectors and Developers Assoc. of Canada
1998	Stephen D. Bechtel, Jr. and Bechtel Corporation	2012	Komatsu America Corp.
1999	Mineral Information Institute	2013	Joy Global
2000	Modular Mining Systems, Inc.	2014	Empire Southwest
2001	Mintec, Inc.	2015	InfoMine
2002	Senator Larry Craig	2016	WestLand Resources, Inc.
2003	Aker Kvaerner	2017	SRK Consulting
2004	Mining and Metallurgical Society of America	2018	Sundt Construction, Inc.
2005	Northwest Mining Association	2019	Golder
2006	Mountain States Legal Foundation	2020	Hexagon
2007	M3 Engineering & Technology Corporation	2021	Southwest Energy

Special Citation Awards (1994-2021)

1994	Senator Dennis DeConcini	2014	Rio Tinto Kennecott Bingham Canyon
2010	Friends of Ariz. Mining & Mineral Museum	2015	Independent Mining Consultants
2011	Chilean Government - Industry Partnership	2016	WAAME
2012	ASARCO LLC	2018	SABC
2013	Arizona Geological Survey	2021	AIME

Presidential Citation Award (2009)

2009	Caterpillar, Inc.
------	-------------------

American Mining Hall of Fame

Medal of Merit Recipients (1989-2021)

1989	Ralph J. Roberts		
1989	Victor H. Verity	2007	William G. Davenport
		2007	Harry Parker
1990	John S. Livermore		
		2008	Barbara A. Filas
1991	George O. Argall, Jr.	2008	Paul Arthur Hodges
1992	Arthur A. Brandt	2009	Mary M. Poulton
1992	William C. Epler	2009	Jean Michel Rendu
1993	Walter E. Heinrichs, Jr.	2010	Terence P. McNulty
1993	Willard C. Lacy	2010	Nyal Niemuth
1994	Donnell W. Agers	2011	Marco T. Einaudi
1994	J. David Lowell	2011	Ralph B. Sievwright
1994	Ronald R. Swanson		
		2012	David C. Lincoln
1995	Warren Kay Pincock	2012	Matthew D. Lengerich
1996	Richard W. Hutchinson	2013	Joseph M. Keane
1996	Charles L. Pillar	2013	Sean D. Dessureault
1997	Hugo T. Dummett	2014	Corale L. & James A. Brierley
1997	Spencer Rowe Titley	2014	David E. Nicholas
		2014	Scott M. Shields
1998	David N. Skillings, Jr.		
1998	José Rubén Velasco Rodríguez	2015	Charles Michael (Mick) Lownds
		2015	Fiorella Giana
1999	Paul S. Allen		
1999	William C. Peters	2016	William R. Assenmacher
		2016	Justin Cross
2000	Leonard Harris	2016	Michelle Lammers
2000	Pedro Sánchez-Mejorada		
		2017	John Lacy
2001	William H. Dresher	2017	Eben Robinson
2001	Warren E. Fenzi		
		2018	Hugh Miller
2002	Richard D. Call	2018	Marian LaLonde
2002	Kenneth L. Zonge		
		2019	Victoria Peacey
2003	Stanley H. Dempsey	2019	Vicki Seppala
2003	James Wm. White	2019	William Sircy
		2019	Cody Sutherland
2004	Edward S. Frohling		
2004	Joaquin Ruiz	2020	Emily King
		2020	Jonathan Jazwinski
2005	Larry McBiles		
2005	Wayne C. Hazen	2021	Sydney Hay
		2021	Sarah Strunk
2006	Leonard R. Judd	2021	Angela Watt
2006	Roshan B. Bhappu		

American Mining Hall of Fame

Inductees from Mining's Past (1983-2021)

M. Lee Allison	1948-2016	John William Mackay	1831-1901
Maxie L. Anderson	1934-1983	Francis W. MacLennan	1876-1947
Frank William Archibald	1920-1987	Hugh Exton McKinstry	1896-1961
William Phipps Blake	1826-1910	Donald H. McLaughlin	1891-1959
Robert Bogart	1923-2002	Frank Wood McQuiston	1904-1987
Allan B. Bowman	1911-1982	Bartolomé de Medina	1497-1585
James Boyd	1904-1987	Robert B. Metcalfe	1825-1905
Bert S. Butler	1877-1960	Charles Meyer	1915-1987
Nellie Cashman	1849-1925	Charles E. Mills	1867-1929
Louis S. Cates	1881-1959	Seeley W. Mudd	1861-1926
J. Parke Channing	1863-1930	Frank Murphy	1854-1917
Roscoe Channing	1868-1961	Samuel Newhouse	1853-1930
Thomas Garfield Chapman	1886-1965	John Barry "Black Jack" Newman	1862-1928
Marco Chiapponi	1854-1929	Georges Ordoñez	1907-1982
William Andrews Clark	1839-1925	Jorge Larrea Ortega	1912-1999
James Colquhoun	1857-1954	William Smith Otis	1813-1839
Patrick Edward Connor	1820-1892	Charles F. Park, Jr.	1903-1990
Frederick Gardner Cottrell	1877-1948	Arthur Barrette Parsons	1887-1966
James Harold Courtright	1908-1986	William H. Peirce	1862-1944
Arthur C. Daman	1889-1968	Richard Alexander Penrose, Jr.	1863-1931
George H. Dern	1872-1936	Albert J. (Al) Perry	1930-2013
Ernest R. Dickie	1902-1955	Charles Debrille Poston	1825-1902
John Van Nostrand Dorr	1872-1962	Kenneth L. Power	1924-1978
James Douglas	1837-1918	Andrew J. Prichard	1830-1902
James Stewart Douglas	1868-1949	Alberto Benavides de la Quintana	1920-2014
Herman Ehrenberg	1818-1866	Frederick Leslie Ransome	1868-1935
John Spence Finlay	1874-1935	Rossiter W. Raymond	1840-1918
Charles F. Fogerty	1921-1981	Kenyon E. Richard	1915-1993
Maurice C. Fuerstenau	1933-2012	Robert H. Richards	1844-1945
Antoine M. Gaudin	1896-1974	Thomas A. Rickard	1864-1953
Juan Jose Gradillo	1830-unk.	Louis D. Ricketts	1859-1940
Wesley P. Goss	1899-1985	Bernhardt Rohe	1909-1992
Louis Caryl Graton	1880-1970	Edwin Burton Royle	1905-1957
William C. Greene	1853-1913	Reno H. Sales	1876-1969
John C. Greenway	1872-1926	Robert Scanlan	1936-1972
Meyer Guggenheim	1825-1905	Harrison Ashley Schmitt	1896-1966
Hal W. Hardinge	1855-1943	Fred Searls, Jr.	1888-1968
George Hearst	1820-1891	Charles Senter	1845-1924
Samuel Peter Heintzelman	1805-1880	Lemuel Coover Shattuck	1866-1938
Earl C. Herkenhoff	1915-2002	Antonio Siraumea	1710-1760
Joseph Austin Holmes	1859-1915	E. A. Cappelen Smith	1873-1949
Herbert C. Hoover	1874-1964	Sarah Herring Sorin	1861-1914
Theodore Jesse Hoover	1971-1955	Earl Tappan Stannard	1882-1949
Daniel C. Jackling	1869-1956	John Murchison Sully	1868-1933
H. Myles Jacob	1913-1997	Arthur F. Taggart	1884-1959
Ira B. Joralemon	1884-1975	William Boyce Thompson	1869-1930
Noah S. Kellogg	1831-1903	Howard Allen Twitty	1909-1989
Jack Furman Kemp	1859-1926	Enos A. Wall	1839-1920
Medora Hooper Krieger	1905-1994	Stewart R. Wallace	1919-2009
Henry Krumb	1875-1958	Thomas F. Walsh	1850-1910
Thomas H. Leggett	1859-1935	Norman L. Weiss	1902-1986
Henry Lesinski	1836-1924	Kathy G. Whitman	1959-2012
Adolph Lewisohn	1849-1938	Arthur Redman Wilfley	1860-1927
Leonard Lewisohn	1847-1902	Ben Williams	1852-1925
John Cromwell Lincoln	1866-1959	Forbes Kingsbury Wilson	1910-1990
Waldemar Lindgren	1860-1939	Edward H. Wissler	1895-1970
Curtis H. Lindley	1850-1920	Pope Yeatman	1861-1953
Thomas S. Lovering	1896-1991		

Mining and Minerals Education Foundation 2022

Officers

Amanda Best - *President*
Robert Tracy - *Vice President*
Robin Barnes - *Secretary*
Shawn Hamilton - *Treasurer*

Board of Governors

Kathy Arnold
Jean Austin
Mark Baker
Anthony Cook
Donald F. Earnest
John Fenn
Yvonne Marshall
Rebecca Martinez
Terry McNulty
Nyal Niemuth
David Rhoades
Brad Ross
Andrew Soderman
Deb St. Aubin
Donald R. Taylor
David Travis
Gene Waken
Will Wilkinson
Chris Wilson
Rod Woodcock

Gold Members

Tom Aldrich
Curtis Bilow
Greg Boyce
John Fenn
Gary J. Goldberg
Nancy Gungor
Shawn Hamilton
Corolla (Cori) Hoag
Steven C. Holmes
Terry McNulty
Thomas Scartaccini
Thomas D. Toole
David Travis
J. Steven Whisler
Will Wilkinson

Sustaining Members

Lawrence G. Dykers
Timothy R. Snider

Honorary Members

Armie Frederick Banfield
Michael Canty

Silver Members

Doug Arnold
Kathy Arnold
Jean Austin
Mekaela Bennett
Stanley Dempsey
R. Gene Dewey
Donald F. Earnest
Richmond Fenn
Barbara Filas
James Harris
John C. Lacy
Robert (Rob) Livermore
Jorge Mascena
Allison Moore
James Norine
Brian Norton
Arlan Ruen
Tim Schannep
Mark Sutton
Lyn Thomas
Gene Waken
Matthew Warfield
Susan Wick

In Memoriam

Lukas Lundin - 2020 Inductee



MMEF Outreach Coordinator

CHRISTOPHER EARNEST
earnest@arizona.edu

School of Mining & Mineral Resources
The University of Arizona

The 2022 Prazen Living Legend Award was awarded to the education outreach program at the Lowell Institute of Mineral Resources at the National Mining Hall of Fame Banquet on October 22, 2022.



SPECIAL THANKS

The American Mining Hall of Fame Committee of the Mining and Minerals Education Foundation wishes to thank Modular Mining for its continued support in overseeing the production of this program.

**MODULAR
MINING**